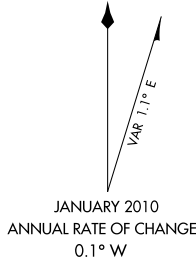


AIRPORT DIAGRAM

AL-5094 (FAA)

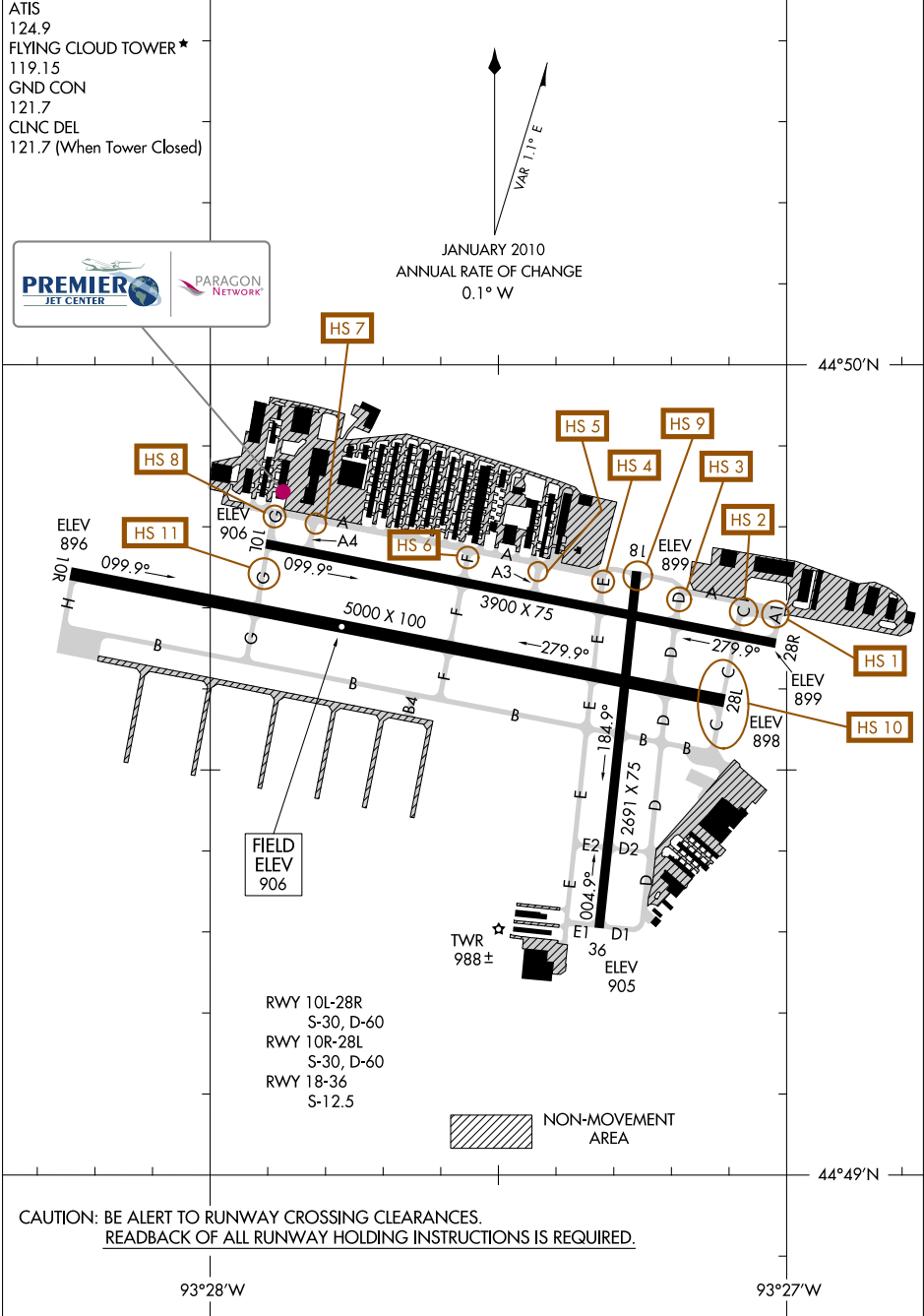
FLYING CLOUD (F'CM)
MINNEAPOLIS, MINNESOTA

ATIS
124.9
FLYING CLOUD TOWER ★
119.15
GND CON
121.7
CLNC DEL
121.7 (When Tower Closed)



NC-1, 21 AUG 2014 to 18 SEP 2014

NC-1, 21 AUG 2014 to 18 SEP 2014



CAUTION: BE ALERT TO RUNWAY CROSSING CLEARANCES.
READBACK OF ALL RUNWAY HOLDING INSTRUCTIONS IS REQUIRED.

AIRPORT DIAGRAM

MINNEAPOLIS, MINNESOTA
FLYING CLOUD (F'CM)