

AIRPORT DIAGRAM

FORT LAUDERDALE-HOLLYWOOD INTL (FLL)
AL-744 (FAA)
FORT LAUDERDALE, FLORIDA

ATIS	135.0
FORT LAUDERDALE TOWER	119.3 257.8
GND CON	121.4
CLNC DEL	128.4

ASDE-X Surveillance System in use.
Pilots should operate transponders with Mode C on all twys and rwys.



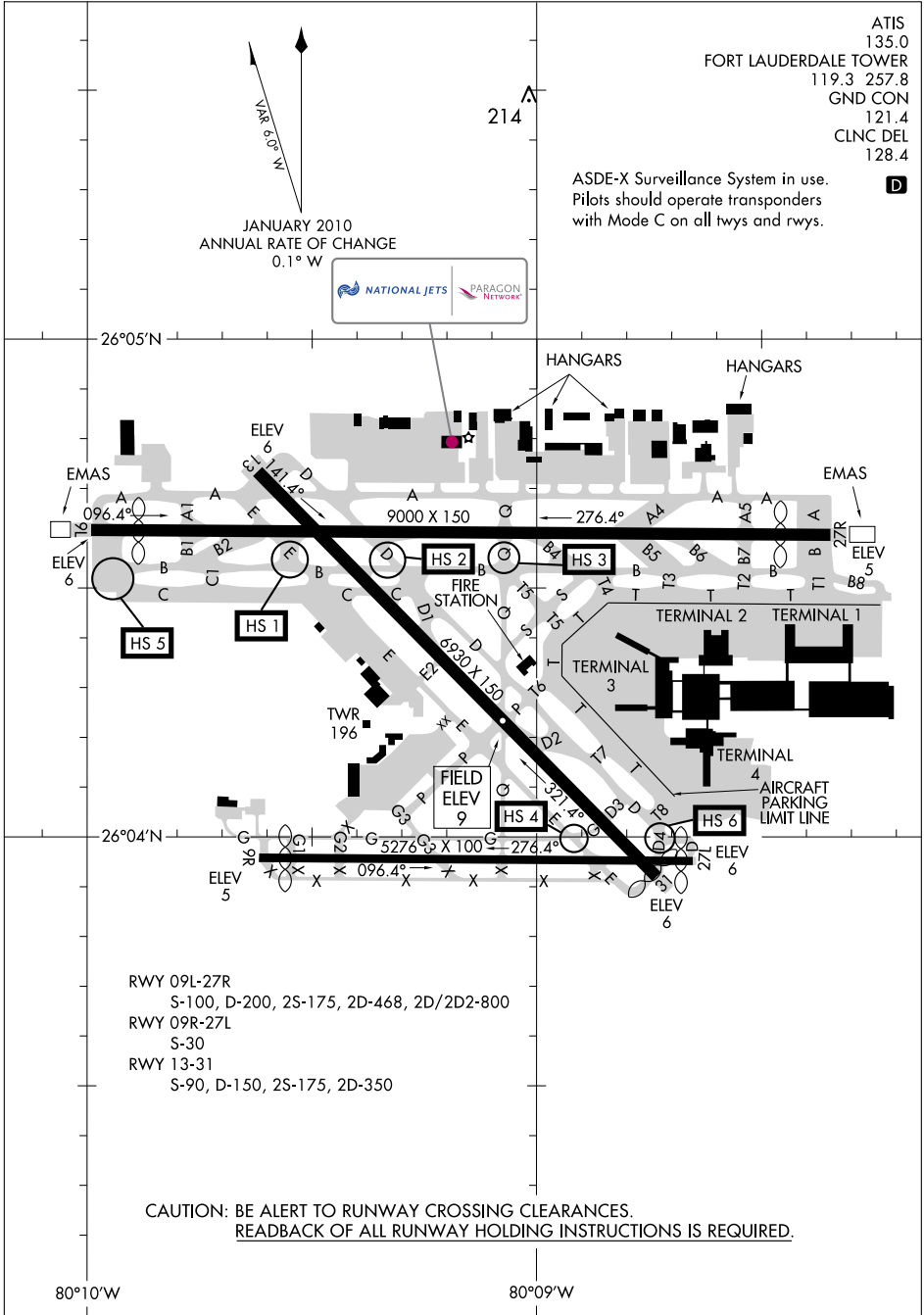
VAR 9.0° W

JANUARY 2010
ANNUAL RATE OF CHANGE
0.1° W



SE-3, 20 OCT 2011 to 17 NOV 2011

SE-3, 20 OCT 2011 to 17 NOV 2011



RWY 09L-27R
S-100, D-200, 2S-175, 2D-468, 2D/2D2-800

RWY 09R-27L
S-30

RWY 13-31
S-90, D-150, 2S-175, 2D-350

**CAUTION: BE ALERT TO RUNWAY CROSSING CLEARANCES.
READBACK OF ALL RUNWAY HOLDING INSTRUCTIONS IS REQUIRED.**

80°10'W

80°09'W

AIRPORT DIAGRAM

FORT LAUDERDALE, FLORIDA
FORT LAUDERDALE-HOLLYWOOD INTL (FLL)