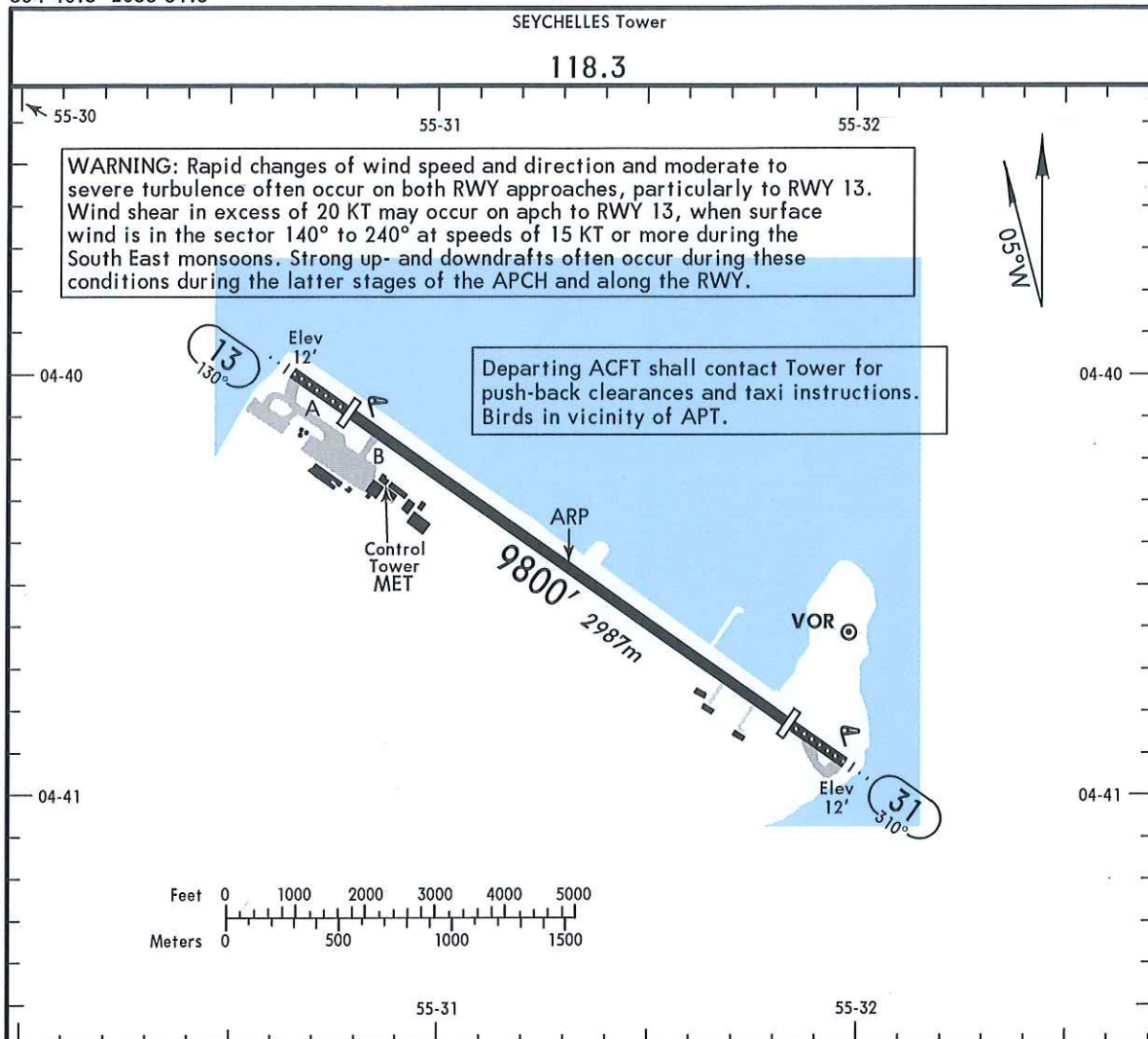


**FSIA/SEZ**  
Apt Elev 12'  
S04 40.5 E055 31.3

**JEPPESSEN SEYCHELLES, SEYCHELLES**  
13 FEB 15 (10-9)  
**SEYCHELLES INTL**

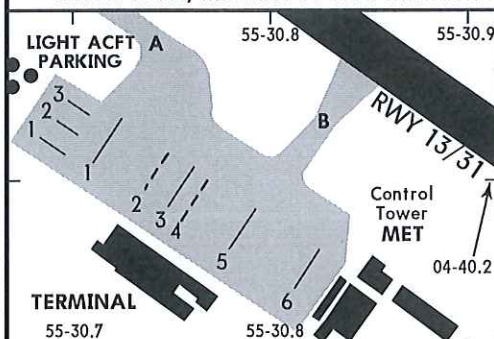


#### ADDITIONAL RUNWAY INFORMATION

RWY		USABLE LENGTHS		TAKE-OFF	WIDTH
		Threshold	Glide Slope		
13	HIRL (60m) HIALS RAIL REIL LDIN ① PAPI-L	8800' 2682m			151'
31	HIRL (60m) ALS REIL PAPI-L (3.0°)		8740' 2664m		46m

① angle 3.0°

Offset to NE, must not be used when more than 2.6 NM from RWY due to intervening high terrain.



All parking positions in front of International Tml are nose-in. AGNIS provided for stands 1, 3, 5 and 6.

#### INS COORDINATES

STAND No.	COORDINATES
1 thru 3	S04 40.2 E055 30.7
4, 5	S04 40.2 E055 30.8
6	S04 40.3 E055 30.8
1 thru 3	LIGHT AIRCRAFT PARKING S04 40.2 E055 30.7

#### NOISE ABATEMENT PROCEDURES

No auxiliary power unit (APU), start-up or run-up between 15:00 UTC and 03:00 UTC unless in accordance with ACFT arrival and departure procedures.

	TAKE-OFF	
	RCLM (DAY only) or RL	NIL (DAY only)
A		
B	400m	500m
C		
D		